

Serial Converter Module(USB ↔ Serial)

■ Features

- Applicable OS : Windows 98, 98SE, ME, 2000, Server 2003, XP, Vista
- Both USB 1.1 and USB 2.0 compatible
- Data transmission / power supply indicating LED
- Easy to connect with PC
- Built-in protection circuit
- Ferrite Core cable for noise reduction
- Non-isolation type

⚠ Please read "Caution for your safety" in operation manual before using.

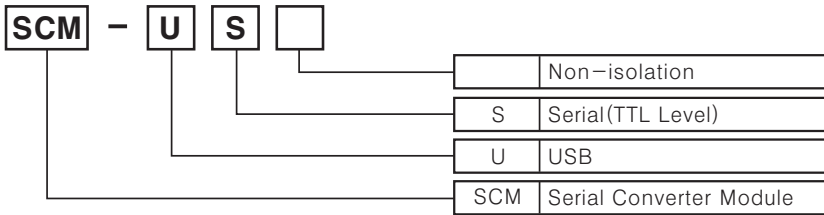


NEW



※ This unit is specifically designed to connect to particular Autonics products.

■ Ordering information



■ Specifications

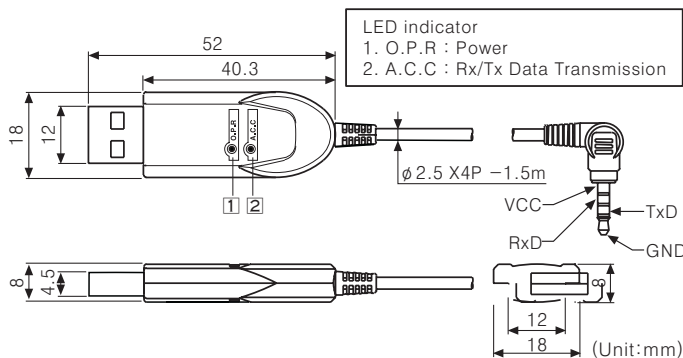
Model		SCM-US
Power supply	(※1)	5VDC (Supplied from PC)
Power consumption		Approx. 1W
Communication speed	(※2)	Recommended ⇨ 9600bps(1200/2400/4800/9600/19200/38400/57600/115200)
Communication Type		Half Duplex
Communication distance		1.5m(No extension allowed)
Isolation type		Non-isolated
Vibration	Destruction	0.75mm amplitude at frequency of 10~55Hz(for 1 min.) in each X, Y, Z direction for 1 hr.
	Malfuction	0.5mm amplitude at frequency of 10~55Hz(for 1 min.) in each X, Y, Z direction for 10 minutes.
Shock	Destruction	300m/s ² (30G) in X, Y, Z directions for 3 times
	Malfuction	100m/s ² (10G) in X, Y, Z directions for 3 times
Ambient temperature		-10 ~ 55℃ (at non-freezing status)
Storage temperature		-20 ~ 60℃ (at non-freezing status)
Ambient humidity		35~85%RH
Connector type		• Computer ⇨ USB(Type A) / • Autonics Products ⇨ Earphone Jack (4 pole stereo phone plug)
Accessory		Install CD
Approval		
Unit weight		Approx. 41g

(※1) USB bus Power is supplied from PC or USB host controller.

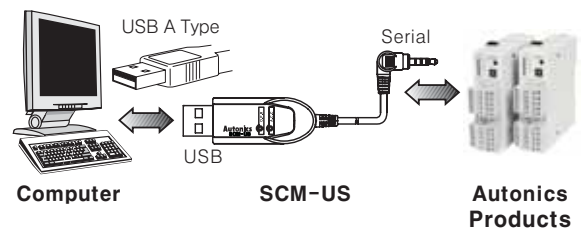
(※2) Protocol and Communication speed are set by Hyper terminal, DAQ master, ParaSet, Modbus Poll. When communicating with Autonics products, set communication speed to 9,600bps.

※ There might be some differences in the specification above depending on PC environment.

■ Dimensions



■ Connection and Installation

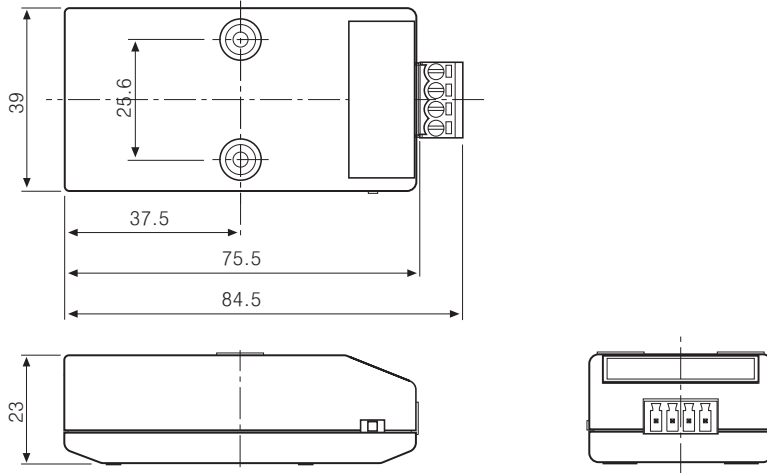


- (A) Counter
- (B) Timer
- (C) Temp. controller
- (D) Power controller
- (E) Panel meter
- (F) Tacho/Speed/Pulse meter
- (G) Display unit
- (H) Sensor controller
- (I) Switching power supply
- (J) Proximity sensor
- (K) Photo electric sensor
- (L) Pressure sensor
- (M) Rotary encoder
- (N) Stepping motor & Driver & Controller
- (O) Graphic panel
- (P) Field network device
- (Q) Production stoppage models & replacement

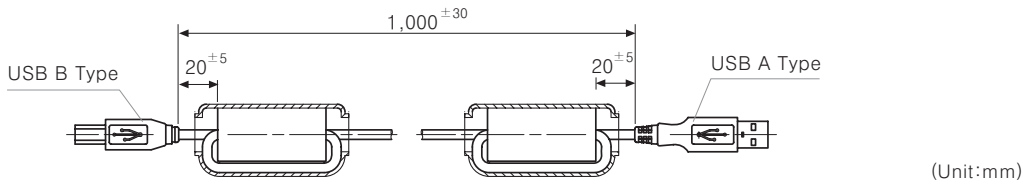
Converter Module

Dimensions

※USB cable is enclosed and also sold separately. (Model: USB AB CBLE)

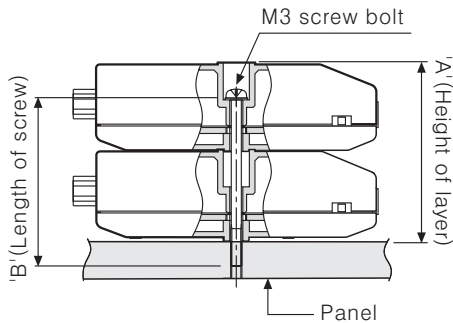


●USB 2.0 AB Type Cable



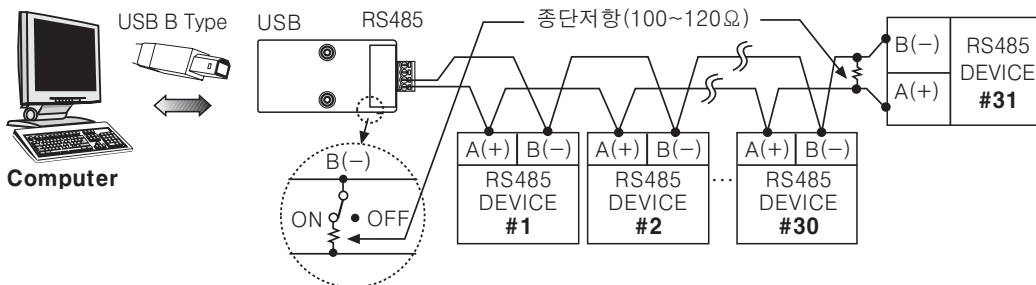
Panel mounting

※Side view of the multilayer



Number of layers (N)	"A" Size (23.3N+1.2)	"B" Size (23.3N-3.3)
1	24.5mm	20.0mm
2	47.5mm	43.3mm
3	71.1mm	66.6mm
4	94.4mm	89.9mm

Connection and Installation



(A) Counter

(B) Timer

(C) Temp. controller

(D) Power controller

(E) Panel meter

(F) Tacho/ Speed/ Pulse meter

(G) Display unit

(H) Sensor controller

(I) Switching power supply

(J) Proximity sensor

(K) Photo electric sensor

(L) Pressure sensor

(M) Rotary encoder

(N) Stepping motor & Driver & Controller

(O) Graphic panel

(P) Field network device

(Q) Production stoppage models & replacement

SCM-US/SCM-US-48I Common Features

Installation

Driver Installation

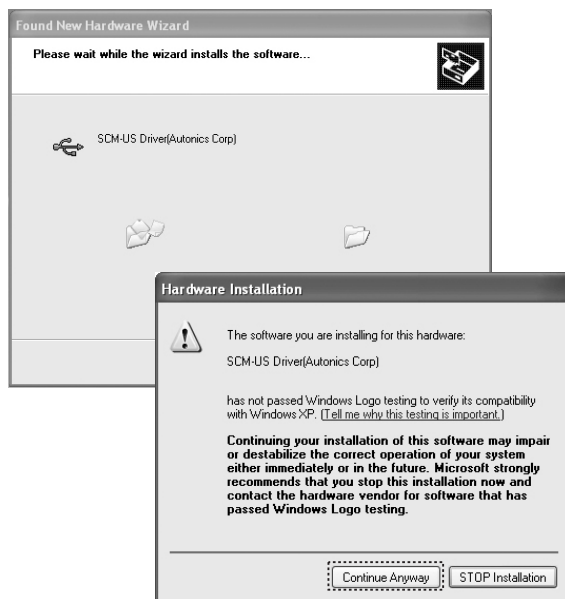
1) Installing via install CD

① Insert the CD-ROM into computer's CD-ROM drive and connect the unit to PC. (CD-ROM will be provided with the products.)

② Select **"Install the software automatically (Recommended)"** and click the Next button when following window is displayed.



③ Hardware installation message will appear while Found New Hardware Wizard is running. Click Continue Anyway to proceed with the installation.



④ The following window will be displayed if the driver is installed properly. Click the Finish button.



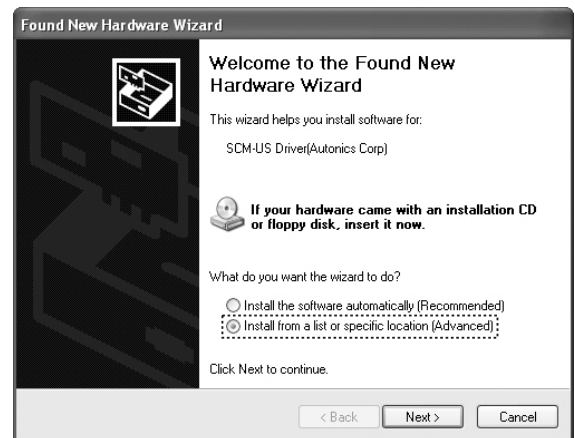
※ SCM-US driver installs "common serial bus controller" first before installing the USB port (COM and LPT). Therefore, it is not an operational error that driver installation proceeds twice.

2) Installing via website download

① Visit our website (<http://www.autronics.com>) and download SCM-US user manual and 'SCM-us.zip' at download center.

② Decompress the file at desired folder and connect SCM-US.

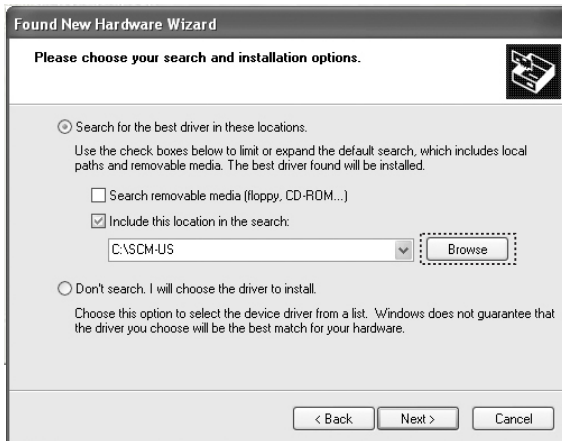
③ Select **"Install from a list or specific location (Advanced)"** and click Next button to proceed with installation.



SCM-US/SCM-US-48I Common Features

※Select 'Search for the best driver in these locations' and 'Include this location in the search' continuously. Click the 'Browse' button and select the folder to unzip a file.

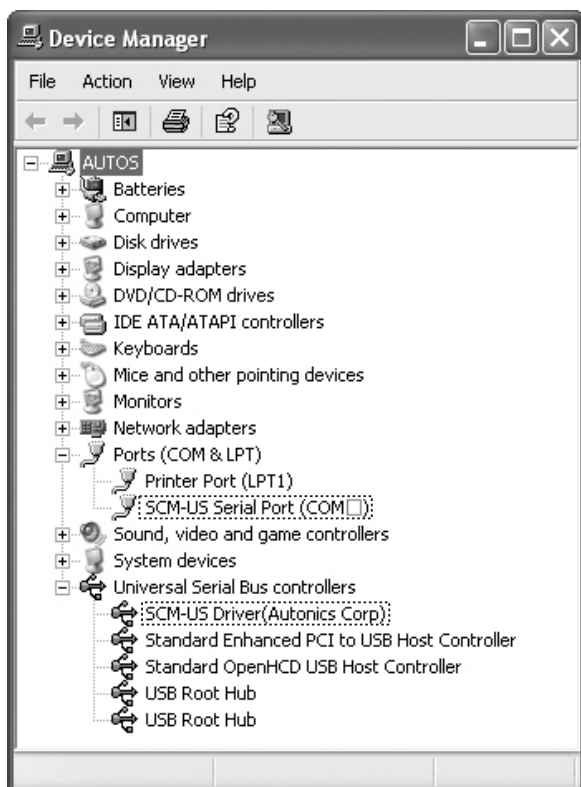
(Following window will be displayed if selecting 'C:\SCM-US' folder to unzip the file)



④Follow the same procedures described in 1) Installing via install CD ② and ③.

Verify that the drivers were installed properly with the Windows Device Manager after finishing installation.

To access the Device Manager, open the folder [My Computer], open the System folder (click right), click the Hardware tab, and click the Device Manager Button. Then, make sure that "SCM-US Driver (Autonics Corp)" is found in "Common Serial Bus Controller" category and "Port (COM and LPT)" is found in "SCM-US Serial Port (COM□)" category. If it is, USB driver is installed properly (In case of Window XP).



Proper usage

- This cable is non-isolated type model. Improper usage of unit may result in damage.
- When changing PC USB port and connecting this unit to another (changed) USB port, USB driver will be reinstalled. This is not a malfunction.
- When connecting SCM-US communication module, please connect PC and SCM-US first. Then, connect Autonics products afterward. When disconnecting the units, remove the unit in reverse order.
- All protocols (Start bit, Stop bit, Data bit, Baud-rate) can be set by provided S/W.
- While detecting USB Driver, VCP Driver is installed after USB Driver is installed. This is not a malfunction.
- In case of multiple connections of unit, No. of COM Port will be numbered in order. This is not a malfunction. (e.g., COM14, COM15, COM16)
- When connecting USB cable, check COM port number before communication. It may take some time for the computer to detect the cable after the cable is connected. This is not a malfunction.
- Do not extend the USB portion of this cable with an extension cable. It may cause cable malfunction.
- This unit is specifically designed to connect to specific Autonics products. Do not apply this unit to other products not supported.
- Observe the rated voltage.
- To avoid malfunctions due to noise, do not place the unit close to a high-voltage power line.
- Proper application environment (Avoid following environments for unit to be used.)
 - Where severe vibration or shock exists
 - Where close to a strong alkali or strong acid
 - Where direct rays of light exist
 - Where near facilities generating strong magnetic forces or electric noise.
- Storage
 - Keep the unit -20~60°C, 35~85% RH with avoiding direct rays of light. It is recommended to keep the unit package as it is.
- Installation environment
 - It shall be used indoor
 - Altitude Max. 2000m
 - Pollution Degree 2
 - Installation Category I

(A) Counter

(B) Timer

(C) Temp. controller

(D) Power controller

(E) Panel meter

(F) Tacho/Speed/Pulse meter

(G) Display unit

(H) Sensor controller

(I) Switching power supply

(J) Proximity sensor

(K) Photo electric sensor

(L) Pressure sensor

(M) Rotary encoder

(N) Stepping motor & Driver & Controller

(O) Graphic panel

(P) Field network device

(Q) Production stoppage models & replacement